

Tuba

Alma Mater

edited by Lopez

Musical score for Tuba, measures 15-27. The score is written in bass clef with a key signature of one flat (B-flat). It consists of three staves. The first staff starts at measure 15 and ends with a fermata. The second staff starts at measure 21 and ends with a fermata. The third staff starts at measure 27 and ends with a fermata. Dynamic markings include *p*, *mf*, and *f*. A handwritten "SD" is written below the third staff.

Tuba

Alma Mater

edited by Lopez

Musical score for Tuba, measures 15-27. The score is written in bass clef with a key signature of one flat (B-flat). It consists of three staves. The first staff starts at measure 15 and ends with a fermata. The second staff starts at measure 21 and ends with a fermata. The third staff starts at measure 27 and ends with a fermata. Dynamic markings include *p*, *mf*, and *f*. A handwritten "SD" is written below the third staff.

Tuba

Star Spangled Banner

arr. Steve Smith

1. 7 8

2. 10 11

12

20 21 22 23 24 25 26 27 28 29 30 31

Tuba

Star Spangled Banner

arr. Steve Smith

1. 7 8

2. 10 11

12

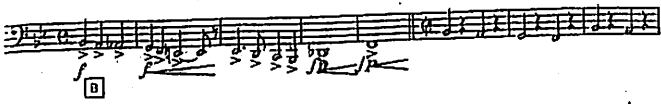
20 21 22 23 24 25 26 27 28 29 30 31

Deep in the Heart of Texas

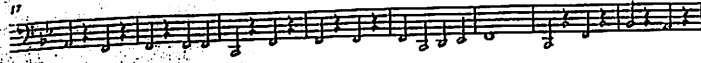
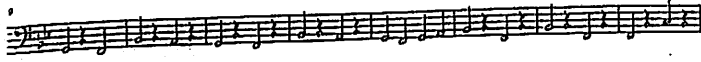
Tuba

arr. Ken Dye

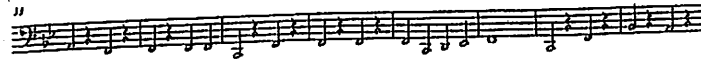
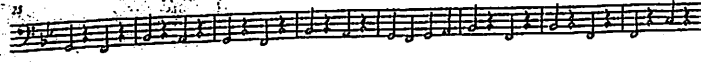
A



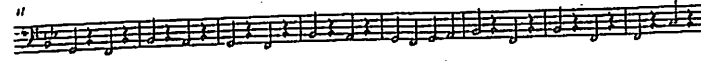
B



C



D



E



Deep in the Heart of Texas

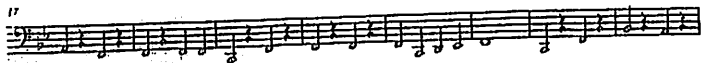
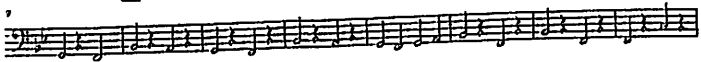
Tuba

arr. Ken Dye

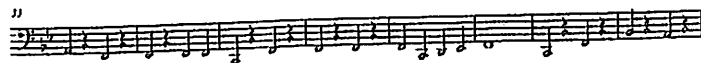
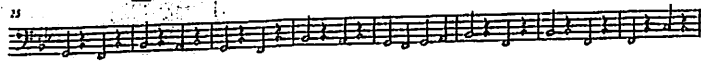
A



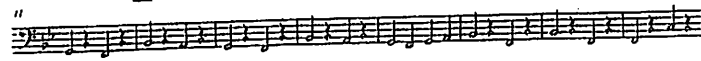
B



C



D



E



Tuba

Kick-Off

arr. Lopez

Musical score for Tuba, first system. The score consists of four staves of music. The first staff begins with a measure containing a whole note G2, followed by a double bar line and a measure with a whole note G2. Above the first measure is a '4' indicating a quadruple rest. The second staff starts at measure 12. The third staff starts at measure 20. The fourth staff starts at measure 28 and ends with a double bar line and a '3' indicating a triplet. The word 'sim.' is written below the first staff.

Tuba

Kick-Off

arr. Lopez

Musical score for Tuba, second system. The score consists of four staves of music. The first staff begins with a measure containing a whole note G2, followed by a double bar line and a measure with a whole note G2. Above the first measure is a '4' indicating a quadruple rest. The second staff starts at measure 12. The third staff starts at measure 20. The fourth staff starts at measure 28 and ends with a double bar line and a '3' indicating a triplet. The word 'sim.' is written below the first staff.

Commissioned by and dedicated to the 2016-17 Robert E. Lee HIS Band, Baytown, Texas.
Robert Foulan, Caleb Lopez and Stefan Icc directors.

Long Ago

for band and opt. sabb chorus

Leon Steward
2016

Musical score for the top system of 'Long Ago'. It consists of six staves. The first staff is for the vocal line, starting with a vocal line and a 'du' marking. The second staff is for the saxophone section, marked 'ff'. The third staff is for the trumpet section, marked 'f'. The fourth staff is for the trombone section, marked 'mf'. The fifth staff is for the percussion section, marked 'f'. The sixth staff is for the bass section, marked 'f'. The score includes measure numbers 5 through 34 and dynamic markings such as *f*, *mf*, *ff*, and *du*.

Stately ♩ = 80
2 3 4

Commissioned by and dedicated to the 2016-17 Robert E. Lee HIS Band, Baytown, Texas.
Robert Foulan, Caleb Lopez and Stefan Icc directors.

Long Ago

for band and opt. sabb chorus

Leon Steward
2016

Musical score for the bottom system of 'Long Ago'. It consists of six staves, identical in notation to the top system. The first staff is for the vocal line, starting with a vocal line and a 'du' marking. The second staff is for the saxophone section, marked 'ff'. The third staff is for the trumpet section, marked 'f'. The fourth staff is for the trombone section, marked 'mf'. The fifth staff is for the percussion section, marked 'f'. The sixth staff is for the bass section, marked 'f'. The score includes measure numbers 5 through 34 and dynamic markings such as *f*, *mf*, *ff*, and *du*.

Stately ♩ = 80
2 3 4

Tuba

Dull Razor Blues

"The Blade" A

arr. Lopez

Measures 1-32 of the tuba part. The music is in 4/4 time with a key signature of one flat (B-flat). The notation includes various rhythmic patterns such as quarter notes, eighth notes, and rests. Measure numbers 8, 16, 24, and 32 are indicated at the start of their respective staves. A box labeled 'A' is placed above the first staff, 'B' above the second staff, and 'C' above the fourth staff.

©2015

Measures 40-68 of the tuba part. The music continues in 4/4 time with a key signature of one flat. Measure numbers 40, 47, 54, 61, and 68 are indicated at the start of their respective staves. A box labeled 'D' is placed above the first staff of this section. The title 'DULL RAZOR BLUES' is printed above the first staff of this section.