

Alma Mater

Horn in F 1

edited by Lopez

Musical score for Horn in F 1, measures 15-28. The score is written on three staves. The first staff (measures 15-20) begins with a treble clef, a key signature of one flat (B-flat), and a 3/4 time signature. It contains a melodic line with a dynamic marking of *f* at measure 15. The second staff (measures 21-27) continues the melody with a dynamic marking of *f* at measure 21, followed by a *p* (piano) dynamic marking and a crescendo hairpin leading to an *f* dynamic marking at measure 27. The third staff (measures 28-34) continues the melodic line. The piece concludes with a double bar line at the end of measure 34.

Alma Mater

Horn in F 1

edited by Lopez

Musical score for Horn in F 1, measures 15-28. The score is written on three staves. The first staff (measures 15-20) begins with a treble clef, a key signature of one flat (B-flat), and a 3/4 time signature. It contains a melodic line with a dynamic marking of *f* at measure 15. The second staff (measures 21-27) continues the melody with a dynamic marking of *f* at measure 21, followed by a *p* (piano) dynamic marking and a crescendo hairpin leading to an *f* dynamic marking at measure 27. The third staff (measures 28-34) continues the melodic line. The piece concludes with a double bar line at the end of measure 34.

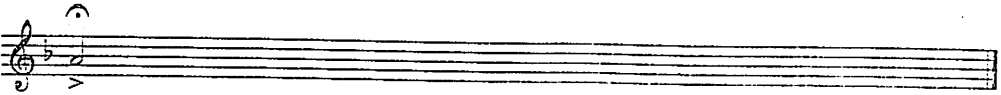
Mellophone

SSB

1



20



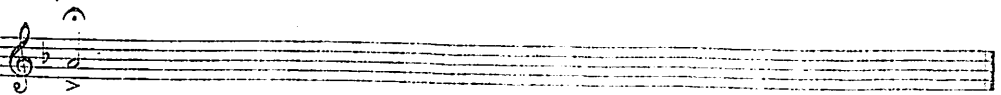
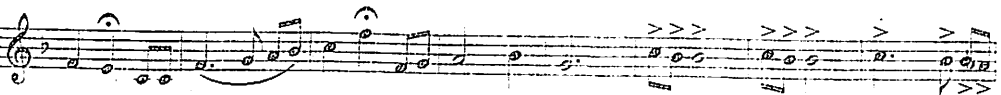
Mellophone

SSB

1



20



Horn in F

Deep in the Heart of Texas

arr. Ken Dye

Horn in F

Deep in the Heart of Texas

arr. Ken Dye

Horn in F

Kick-Off

arr. Lopez

4

sim.

12

22

32

8

Horn in F

Kick-Off

arr. Lopez

4

sim.

12

22

32

8

Commissioned by and dedicated to the 2016-17 Robert E. Lee IIS Band, Baytown, Texas.
Robert Poulan, Caleb Lopez and Stefan Ice directors.

horn in F

Long Ago

for band and opt. satb chorus

Leon Steward

2016

Stately ♩ = 80

Musical score for horn in F, measures 1-34. The score is written in 4/4 time with a key signature of two flats (B-flat and E-flat). The tempo is marked 'Stately' with a quarter note equal to 80 beats per minute. The dynamics range from *f* (forte) to *ff* (fortissimo). The score consists of five staves of music, with measure numbers 1 through 34 indicated above the notes. The piece concludes with a double bar line at measure 34.

Commissioned by and dedicated to the 2016-17 Robert E. Lee HS Band, Baytown, Texas.
Robert Poulan, Caleb Lopez and Stefan Ice directors.

horn in F

Long Ago

for band and opt. satb chorus

Leon Steward

2016

Stately ♩ = 80

Musical score for horn in F, measures 1-34. The score is written in 4/4 time with a key signature of two flats (B-flat and E-flat). The tempo is marked 'Stately' with a quarter note equal to 80 beats per minute. The dynamics range from *f* (forte) to *ff* (fortissimo). The score consists of five staves of music, with measure numbers 1 through 34 indicated above the notes. The piece concludes with a double bar line at measure 34.

Horn in F 1

Dull Razor Blues

"The Blade"^A

arr. Lopez

Musical score for Horn in F 1, measures 1-36. The score is written in 4/4 time and consists of five staves. Measure numbers 9, 19, 28, and 36 are indicated at the start of their respective staves. Chord markers B and C are placed below the staves at measures 13 and 25 respectively.

©2015

Musical score for Horn in F 1, measures 43-69. The score is written in 4/4 time and consists of four staves. Measure numbers 43, 51, 60, and 69 are indicated at the start of their respective staves. The title "DULL RAZOR BLUES" is centered above the first staff. A chord marker D is placed below the first staff at measure 47.