

Bartione & 9.2

Scales:

B/C



Musical notation for the B/C scale in treble clef, common time. The scale consists of two lines of eighth notes: the first line ascending from B4 to C5, and the second line descending from C5 to B3. The notation includes a treble clef, a common time signature, and a key signature of one flat (Bb).

F/G



Musical notation for the F/G scale in treble clef, common time. The scale consists of two lines of eighth notes: the first line ascending from F4 to G5, and the second line descending from G5 to F3. The notation includes a treble clef, a common time signature, and a key signature of one sharp (F#).

A/Bb



Musical notation for the A/Bb scale in treble clef, common time. The scale consists of two lines of eighth notes: the first line ascending from A4 to Bb5, and the second line descending from Bb5 to A3. The notation includes a treble clef, a common time signature, and a key signature of two flats (Bb).

Eb/F

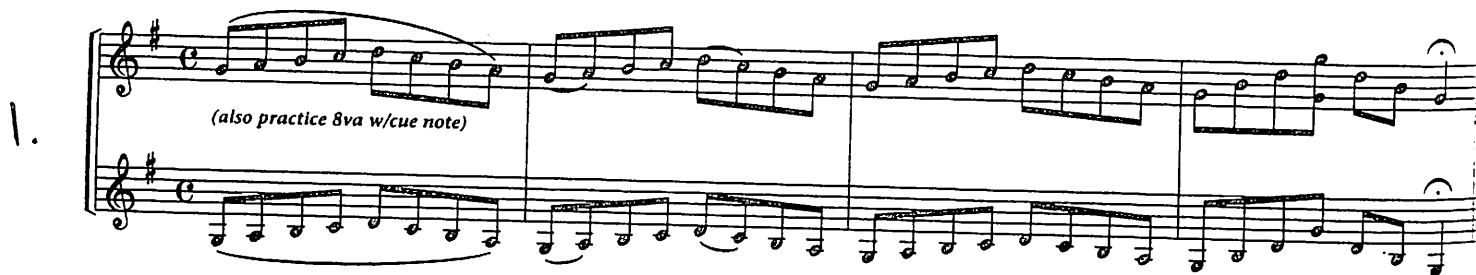


Musical notation for the Eb/F scale in treble clef, common time. The scale consists of two lines of eighth notes: the first line ascending from Eb4 to F5, and the second line descending from F5 to Eb3. The notation includes a treble clef, a common time signature, and a key signature of three flats (Eb).

Technique: Pick an Octave

1.

(also practice 8va w/cue note)



Musical notation for technique exercise 1 in treble clef, common time. It features two staves. The top staff has a melodic line with eighth notes and a slur over the first two measures. The bottom staff has a bass line with eighth notes. The key signature is one sharp (F#).

2.

(also practice 8va)

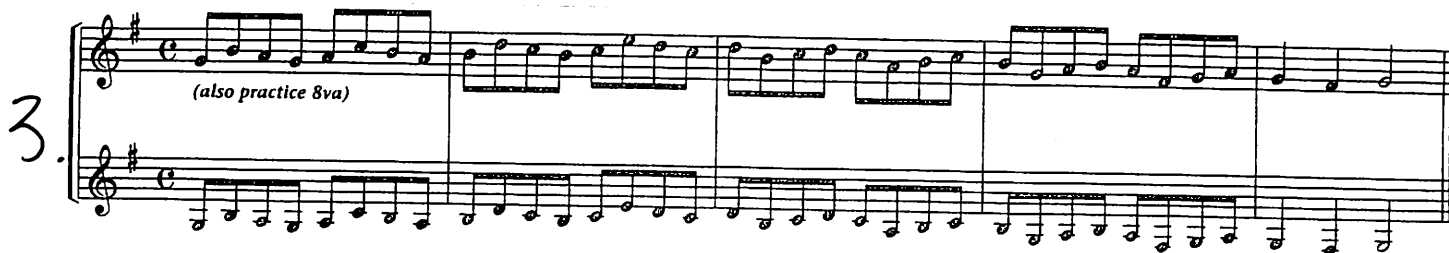


Musical notation for technique exercise 2 in treble clef, common time. It features two staves. The top staff has a melodic line with eighth notes and a slur over the first two measures. The bottom staff has a bass line with eighth notes. The key signature is one sharp (F#).

W32C1.

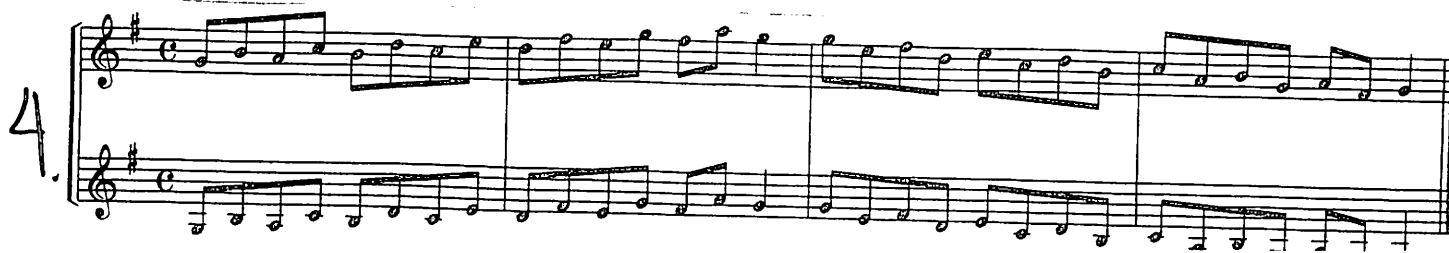
3.

(also practice 8va)



Musical notation for technique exercise 3 in treble clef, common time. It features two staves. The top staff has a melodic line with eighth notes and a slur over the first two measures. The bottom staff has a bass line with eighth notes. The key signature is one sharp (F#).

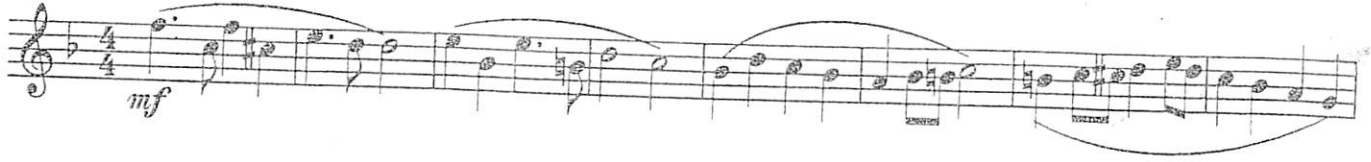
4.



Musical notation for technique exercise 4 in treble clef, common time. It features two staves. The top staff has a melodic line with eighth notes and a slur over the first two measures. The bottom staff has a bass line with eighth notes. The key signature is one sharp (F#).

Tune No. 75

Ballad



9.

Those who count together, play together!

A. $\frac{4}{4}$

B. $\frac{4}{4}$

C. $\frac{4}{4}$

D. $\frac{4}{4}$

E. $\frac{4}{4}$

F. $\frac{4}{4}$

G. $\frac{4}{4}$

H. $\frac{4}{4}$

I. $\frac{4}{4}$

J. $\frac{4}{4}$

K. $\frac{4}{2}$

L. $\frac{4}{2}$

M. $\frac{4}{2}$

N. $\frac{4}{2}$