

# Alto Sax 10.2

## Scales

B $\flat$ /G



Musical notation for the B $\flat$ /G scale in treble clef, common time. The scale starts on G4 and ends on G5. The notes are: G4, A4, B4, C5, D5, E5, F5, G5. The first half of the scale is ascending, and the second half is descending.

F/D



Musical notation for the F/D scale in treble clef, common time. The scale starts on D4 and ends on D5. The notes are: D4, E4, F4, G4, A4, B4, C5, D5. The first half of the scale is ascending, and the second half is descending.

C/A



Musical notation for the C/A scale in treble clef, common time. The scale starts on A3 and ends on A4. The notes are: A3, B3, C4, D4, E4, F4, G4, A4. The first half of the scale is ascending, and the second half is descending.

G/E



Musical notation for the G/E scale in treble clef, common time. The scale starts on E3 and ends on E4. The notes are: E3, F3, G3, A3, B3, C4, D4, E4. The first half of the scale is ascending, and the second half is descending.

D/B



Musical notation for the D/B scale in treble clef, common time. The scale starts on B2 and ends on B3. The notes are: B2, C3, D3, E3, F3, G3, A3, B3. The first half of the scale is ascending, and the second half is descending.

A/F#



Musical notation for the A/F# scale in treble clef, common time. The scale starts on F#3 and ends on F#4. The notes are: F#3, G3, A3, B3, C4, D4, E4, F#4. The first half of the scale is ascending, and the second half is descending.

E/D $\flat$



Musical notation for the E/D $\flat$  scale in treble clef, common time. The scale starts on D $\flat$ 3 and ends on D $\flat$ 4. The notes are: D $\flat$ 3, C $\flat$ 3, B $\flat$ 2, C $\flat$ 3, D $\flat$ 3, E3, F3, D $\flat$ 4. The first half of the scale is ascending, and the second half is descending.

D $\flat$ /B $\flat$



Musical notation for the D $\flat$ /B $\flat$  scale in treble clef, common time. The scale starts on B $\flat$ 2 and ends on B $\flat$ 3. The notes are: B $\flat$ 2, C $\flat$ 3, D $\flat$ 3, E3, F3, G3, A3, B $\flat$ 3. The first half of the scale is ascending, and the second half is descending.

A $\flat$ /F



Musical notation for the A $\flat$ /F scale in treble clef, common time. The scale starts on F3 and ends on F4. The notes are: F3, G3, A $\flat$ 3, B3, C4, D4, E4, F4. The first half of the scale is ascending, and the second half is descending.

E $\flat$ /C



Musical notation for the E $\flat$ /C scale in treble clef, common time. The scale starts on C3 and ends on C4. The notes are: C3, D3, E $\flat$ 3, F3, G3, A3, B3, C4. The first half of the scale is ascending, and the second half is descending.

# Technique: Pick an Octave

1

2

3

4

# TUNE

Tune No. 184  
Allegro

# 14.

Sixteenth Notes



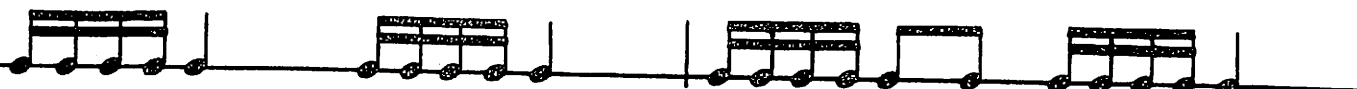
= 1 beat

Write in counting.

Remember! If you can count it, you can play it.

A.

$\frac{4}{4}$



B.

$\frac{4}{4}$



C.

$\frac{4}{4}$



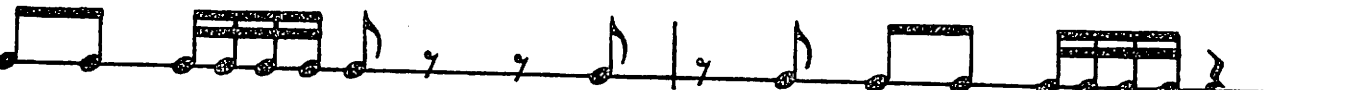
D.

$\frac{4}{4}$



E.

$\frac{4}{4}$



F.

$\frac{4}{4}$



G.

$\frac{4}{4}$



H.

$\frac{4}{4}$



I.

$\frac{4}{4}$



J.

$\frac{4}{4}$

